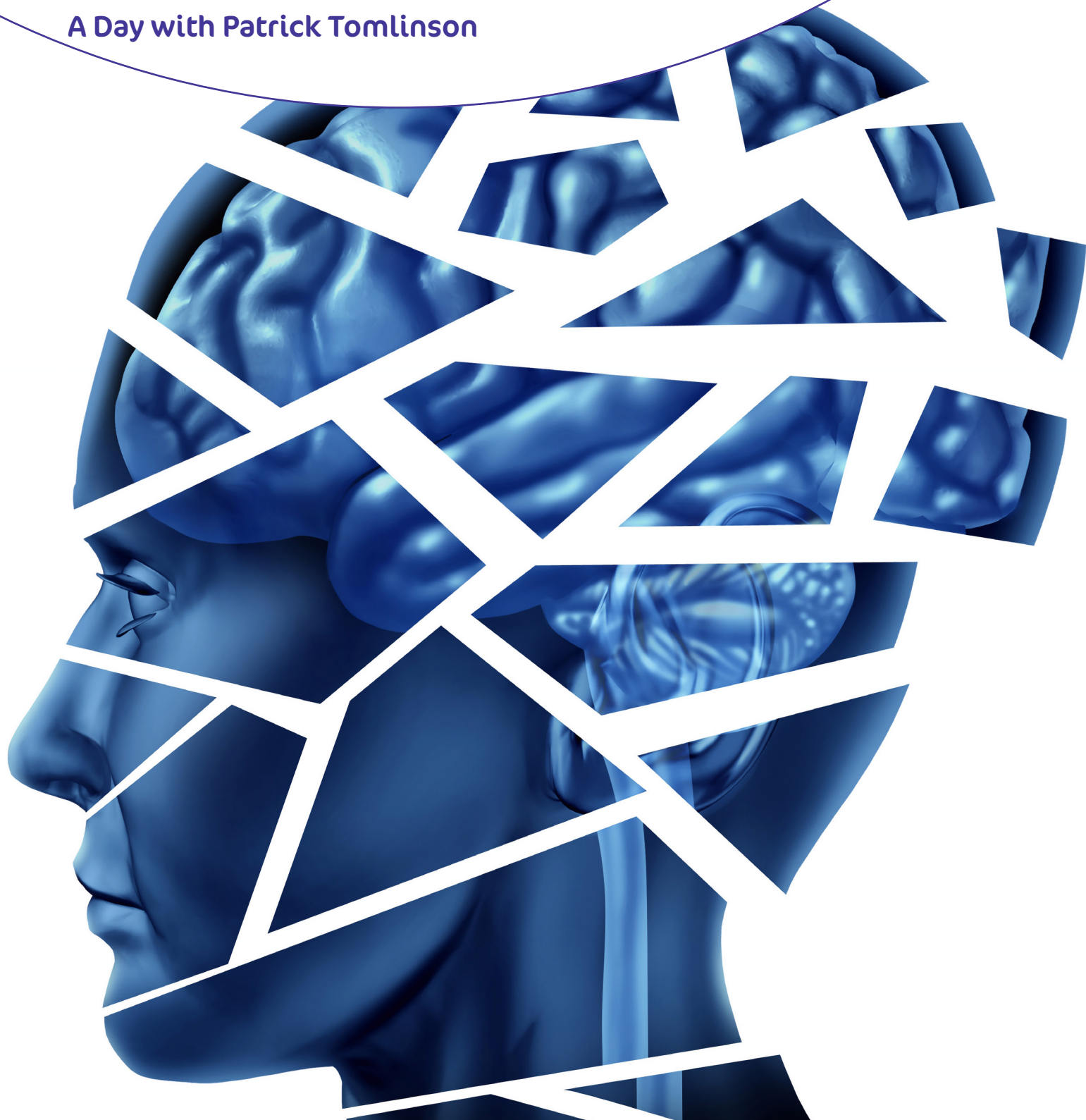




**Moore House**  
Training Academy

# **The Leadership and Management of Trauma Services**

**A Day with Patrick Tomlinson**





[www.moorehousegroup.org.uk](http://www.moorehousegroup.org.uk)  
[www.moorehouse.org.uk](http://www.moorehouse.org.uk)  
[www.jmtservices.org.uk](http://www.jmtservices.org.uk)  
[www.janemooretrust.org.uk](http://www.janemooretrust.org.uk)

**Date:** 10th May 2022, 10:00 - 16:00  
**Venue:** Moore House Training Academy, Livingston, or Online  
**Cost:** £129 in person, £119 virtually

The Promise Plan 21-24 states that “The workforce will feel supported to respond to behaviour in a trauma informed way that reflects a deep understanding of the children in their care.”

Join us in person, or virtually, for a day with Patrick Tomlinson (Author and Trauma Specialist) to explore what really matters in the leadership and management of trauma-informed services.

#### Discussion Topics

1. Leadership and Management – Authority, Delegation, Managing Anxiety in Leadership roles, The Nature of Stress
2. Vision, Mission, and Values
3. The relationship between Organisation & Therapeutic Task, Organisational Integration
4. Containment and Emotional Intelligence
5. Psychological Safety and Polyvagal Theory, Organisational Psychology Applications
6. Culture & Congruence

#### Workshop A

Exploring practical implications of the ideas presented – for example, in relation to training, supervision, and the role of leaders. How do leaders manage themselves and what processes are needed to support effective management?

#### Workshop B

Exploring the main challenges and what actions we can take.

Spaces are limited for attending in person, and will be allocated on a first come, first served basis. However there is also the opportunity to join us virtually.

---

#### How to book your place:

Contact Fiona Duncan Email: [events@moorehouse.org.uk](mailto:events@moorehouse.org.uk)

Tel 01506 401 700

---



**Moore House Group**  
Units 3A & 3B, Alba Pavilions,  
Alba Campus, Livingston,  
EH54 7HG  
**T:** 01506 401 700  
**E:** [info@moorehouse.org.uk](mailto:info@moorehouse.org.uk)

